

Access To Early Childhood Services For Children And Families Prenatal Through Age 5

Family involvement is critical throughout a child's life. The parents or primary caregivers are seen as the experts about their child. Service providers provide support to the family.



FAMILY
(lifespan)



**Medical, Dental, and Social
Emotional Services**



Alabama's Early Intervention System
(ages 0 through 2)



**Services For Preschool Children
with Disabilities (ages 3 through 5)**



Home Visiting
(prenatal through age 5)



Child Care
(age 0+)



Early Head Start/Head Start
(prenatal through age 5)



First Class Pre-K
(age 4)



FAMILY (lifespan)

Families are the primary decision makers for children's healthy development. Families are responsible for:

- Choosing culturally and linguistically competent support and service providers
- Setting goals
- Designing, implementing, and evaluating programs
- Monitoring outcomes
- Partnering in funding decisions
- Engaging in policy and procedure governing care for all children

When a **CHILD** demonstrates a need

PARENTS/CAREGIVERS respond to a child's needs by providing care and seeking additional resources

HEALTH INSURANCE

- Medicaid
- ALL Kids
- Private Insurance

NATURAL SUPPORTS

- Grandparents, Relatives, Neighbors, Friends, Teachers, Faith-based & Other Community Partners

COMMUNITY SERVICE PROVIDERS

SEEK ADDITIONAL SUPPORT

ADVOCACY

MONITOR PROGRESS

DECISION MAKING

DEPARTMENT OF HUMAN RESOURCES

- FOOD ASSISTANCE DIVISION Supplemental Nutrition Assistance Program (SNAP)
 - FAMILY ASSISTANCE DIVISION Temporary Assistance for Needy Families (TANF)
- dhr.alabama.gov

ALABAMA NETWORK OF FAMILY RESOURCE CENTERS

Located around the state to serve and assist families by identifying and addressing barriers to success
anfconline.homestead.com

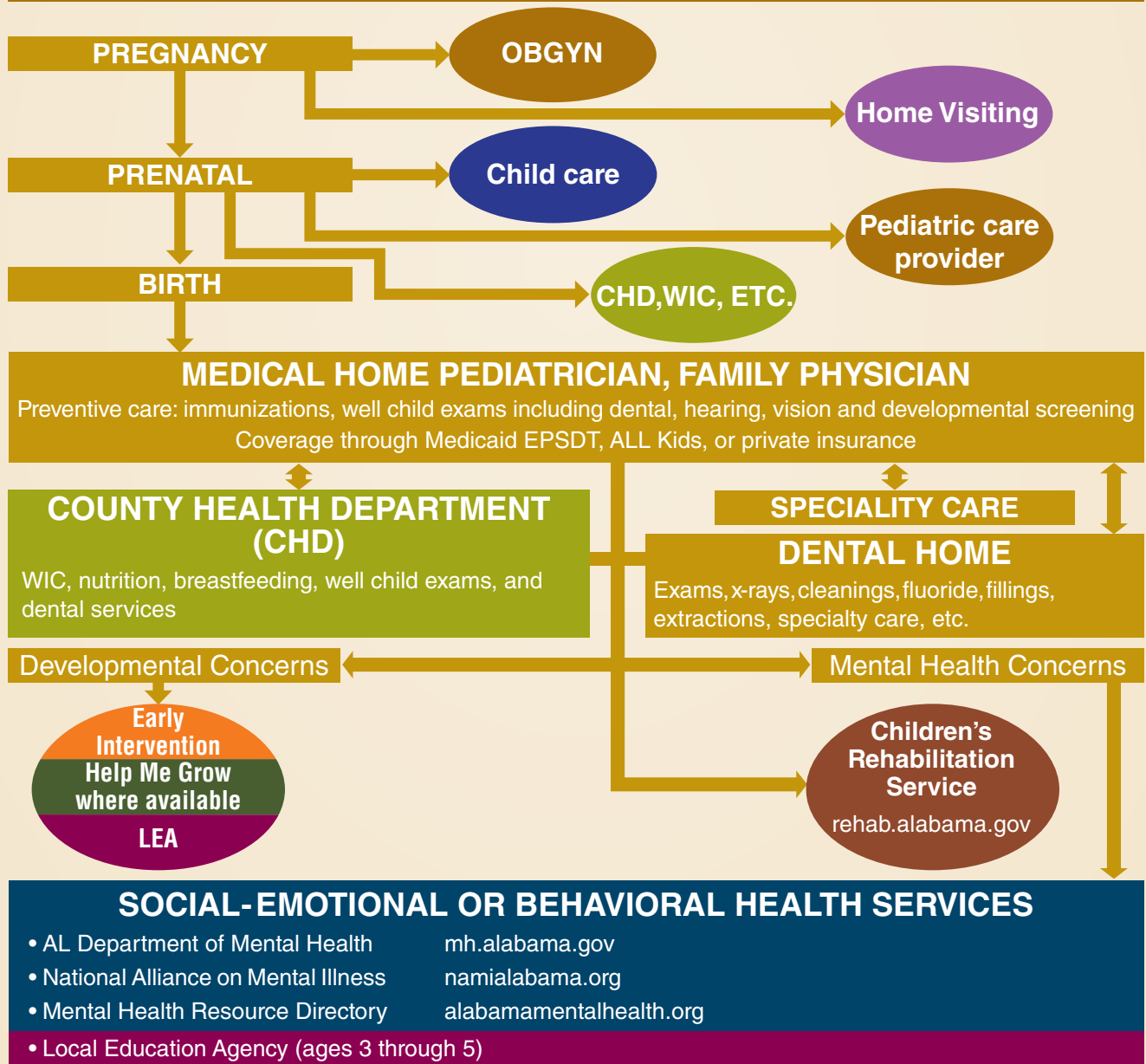
COMMUNITY ACTION AGENCIES

Provide direct social services to families with low and moderate incomes caaalabama.org



MEDICAL, DENTAL, AND SOCIAL EMOTIONAL SERVICES

Families should utilize preventive care services available, including screenings, and connect to a medical and dental home.





ALABAMA'S EARLY INTERVENTION SYSTEM (ages 0 through 2)

Early Intervention is a voluntary system for children who meet eligibility criteria with developmental delays or conditions known to cause developmental delays in one or more of the following: physical, communication, cognitive, adaptive, social or emotional. rehab.alabama.gov/individuals-and-families/early-intervention

Child may be screened with ASQ-3 and/or ASQ-SE, but not required

Family, pediatric care provider, or other community service may refer to Child Find

Service Coordinator will arrange evaluation(s) to determine eligibility

Eligible

Individualized Family Service Plan (IFSP)
developed by team

Early Intervention services are individualized,
developmentally appropriate, and provided in the
natural environment

At age 3, transition to LEA and/or other
community placement

Ineligible

Referral to Help Me Grow where available or call
2-1-1

If needing continued developmental services,
refer to pediatric care provider

Home health
provider or other
appropriate
resources



SERVICES FOR PRESCHOOL CHILDREN WITH DISABILITIES (ages 3 through 5)

Special education services area provided for preschool children with disabilities who meet eligibility criteria of the Alabama Administrative code. To qualify, the disability must adversely affect the child's participation and progress in age appropriate activities.

Request for Initial Evaluation received by Local Education Agency (LEA)

Individual Education Program (IEP) Team determines the need for evaluation

Yes

Written parental consent for initial evaluation obtained

Initial evaluation completed within 60 days of LEA receipt of consent for the initial evaluation

Eligibility for special education services determined within 30 days of completion of last assessment

IEP developed by team within 30 days of eligibility determination

Written parental consent obtained for provision of special education services in the LEA

No

Parent may request another evaluation at a later date

Referral to Help Me Grow where available or call 2-1-1

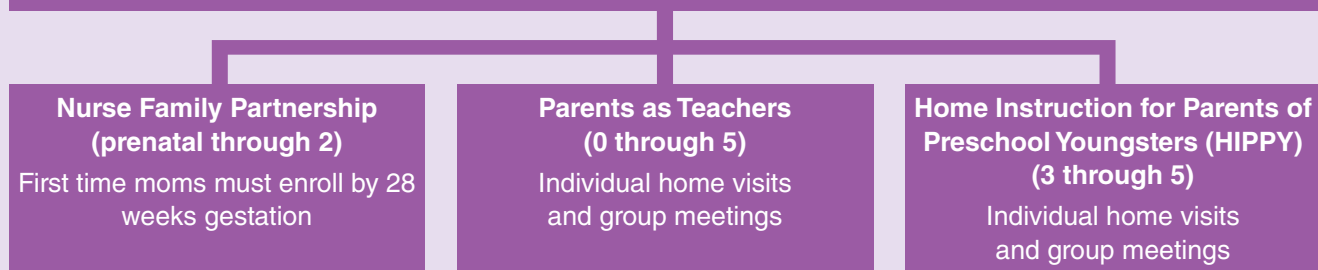
If needing continued developmental services, refer to pediatric care provider

Home health provider
or other appropriate
resources



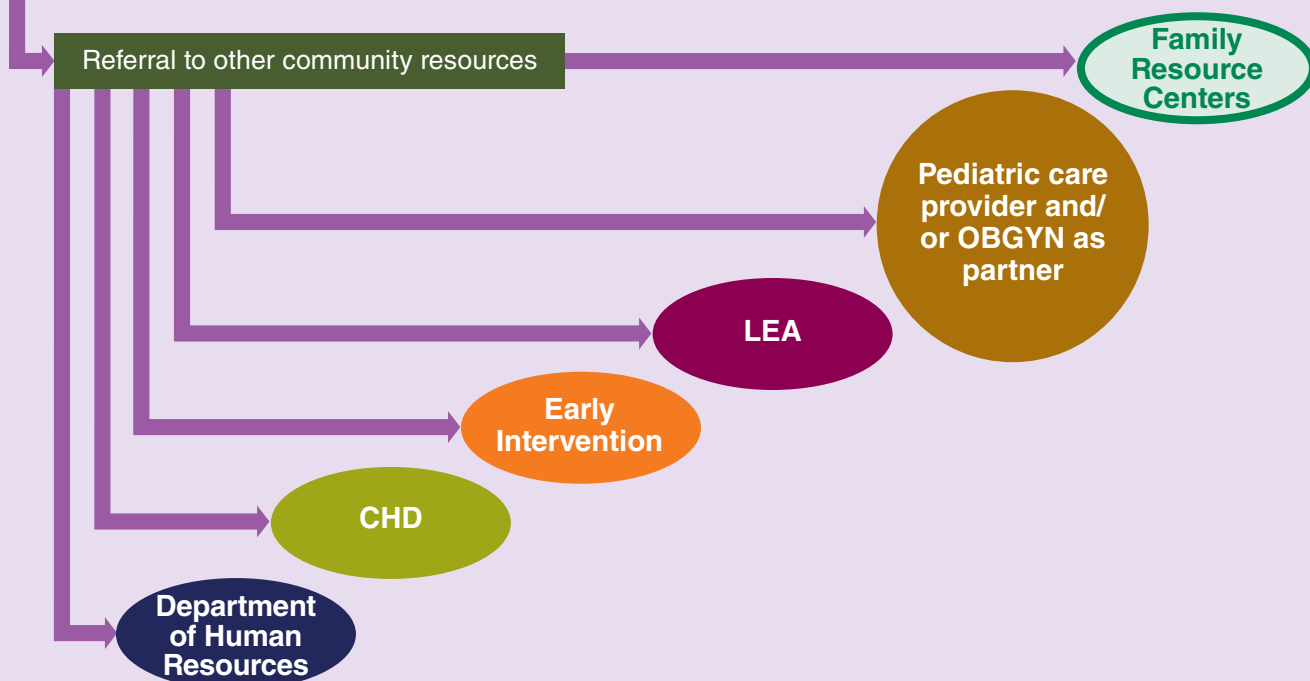
HOME VISITING (prenatal through age 5)

Home Visiting programs exist throughout the state to provide services to help strengthen at-risk families. children.alabama.gov



Home Visiting programs may conduct screenings such as:

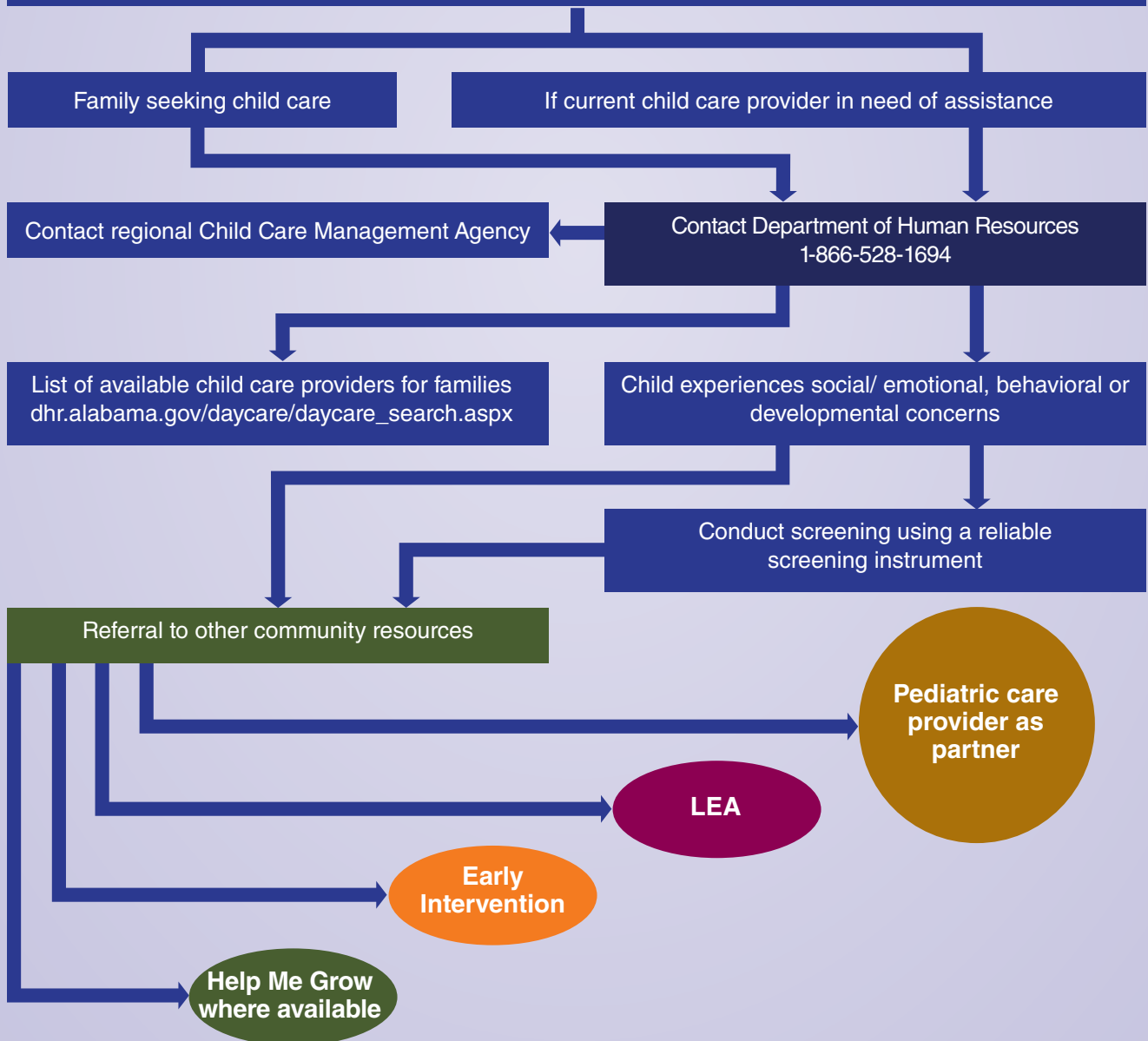
- Edinburgh Postnatal Depression Screen
- ASQ-3 and ASQ:SE
- Domestic Violence Evaluation
- Healthy Home Offerings Via the Mealtime Environment (HOME)





CHILD CARE (age 0+)

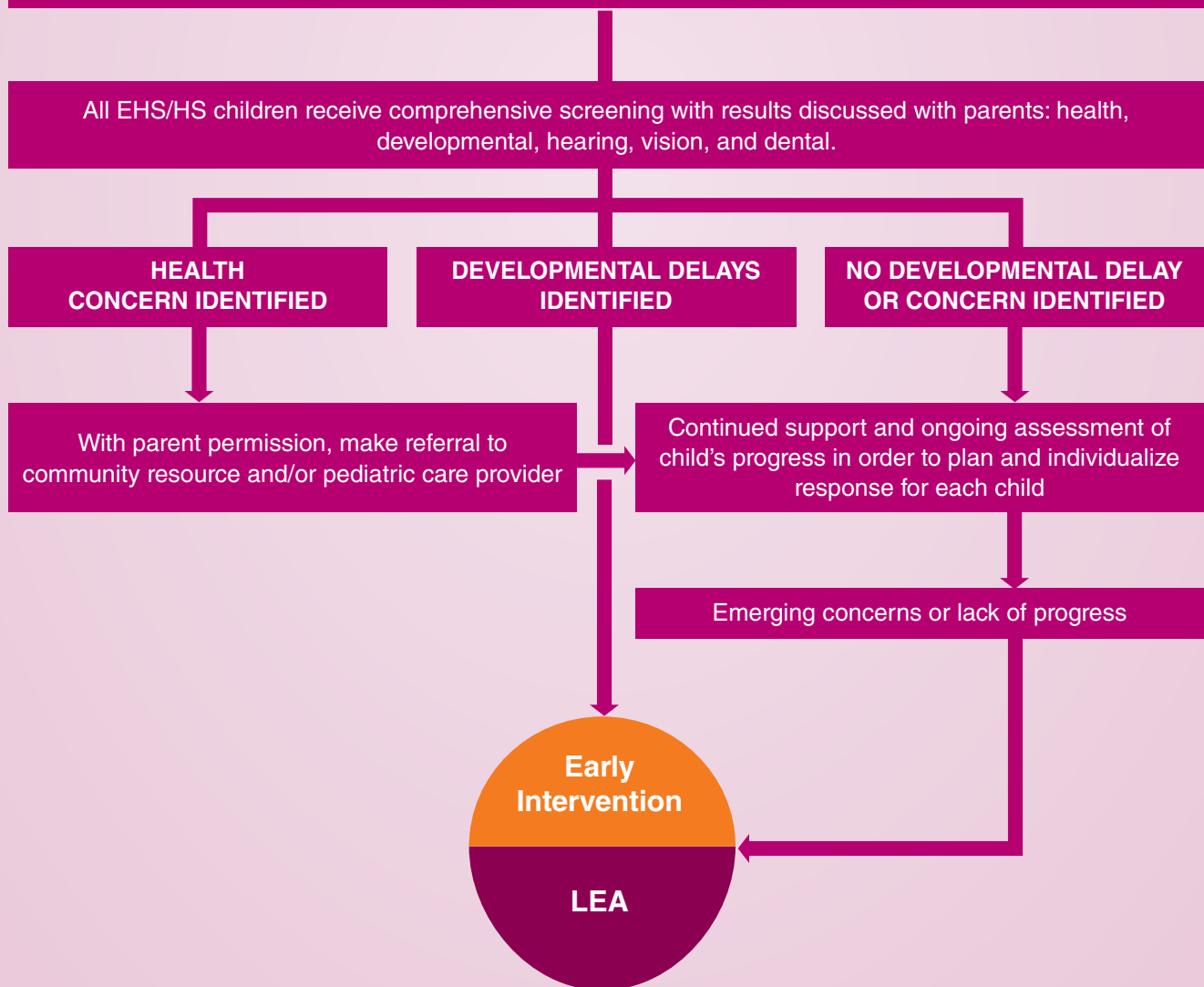
Any quality licensed child care center, certified family home, or half day/preschool.
dhr.alabama.gov/services/Child_Care_Services/Child_Care_Services_Division.aspx





EARLY HEAD START/HEAD START (prenatal through age 5)

Early Head Start/Head Start (EHS/HS) is a federally funded program that serves low income pregnant women and children through age 5. Programs are designed locally based on community needs, may be center-based or home visiting, and promote school readiness. children.alabama.gov

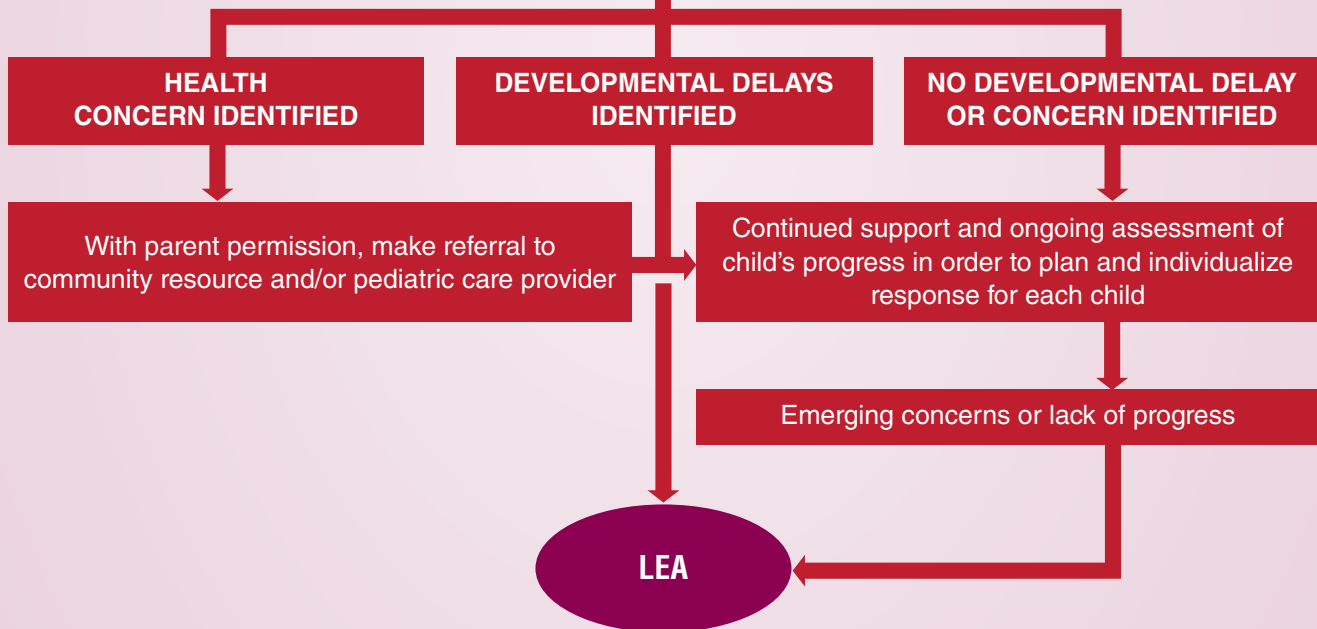




FIRST CLASS PRE-K (age 4)

First Class Pre-K is Alabama's state funded pre-kindergarten program. All children who are 4 years old by September 1 of the year and residents of Alabama are eligible. children.alabama.gov

All Pre-K children receive comprehensive screening with results discussed with parents: health, developmental, hearing, vision, and dental.



NOTE:

Home Visiting

Early Head Start/Head Start

and

First Class Pre-K

are not available in all areas of the state.

ACCESS TO EARLY CHILDHOOD SERVICES FOR CHILDREN AND FAMILIES PRENATAL THROUGH AGE 5

PURPOSE:

To help service providers and families refer young children to appropriate programs and community services that are designed to support families with children from the prenatal stage through age five.

VISION:

To improve the integration of medical, educational, social-emotional and developmental services for families while establishing the need for family involvement and family driven care.

GOAL:

To improve the promotion, prevention, transition and treatment of children and families.

FAMILY

Parenting Assistance Line is a call line staffed by parenting resource specialists. PAL is for anyone who wants information and support in becoming a more confident parent. 1-866-962-3030 pal.ua.edu

MEDICAL, DENTAL, & SOCIAL-EMOTIONAL SERVICES

Medicaid 1-800-362-1504 medicaid.alabama.gov

Well Child Check-Up is a Medicaid program that provides Early, Periodic, Screening, Diagnosis, and Treatment (EPSDT). EPSDT provides preventative health care for children and teens; specialty health care for medically necessary services. medicaid.alabama.gov/content/4.0_programs/4.4.0_medical_services/4.4.3_EPSDT.aspx

ALL Kids: Alabama Children's Health Insurance Program is for children under the age of 19 who do not have health insurance and whose family income is above the Medicaid income level and below 300 percent of the federal poverty level. 1-888-373-5437 adph.org/allkids/

CHD: County Health Departments provide immunization, infectious disease services, and case management services. Contact your local CHD to determine if well child exams or dental services are provided. adph.org/administration/Default.asp?id=505

WIC: The Special Supplemental Nutrition Program for Women, Infants, and Children (WIC) is administered by CHD; provides services including food benefits, nutrition education, breastfeeding counseling and support, and referrals for pregnant, breastfeeding, and postpartum women, infants, and children up to age 5 who meet the qualifications for participation in the WIC program. 1-334-206-5673 adph.org/wic/

Children's Rehabilitation Service provides quality medical, rehabilitative, coordination and support services for children with special health care needs and their families. 1-800-846-3697 rehab.state.al.us/individuals-and-families/childrens-rehabilitation-service

EARLY INTERVENTION

Child Find is the statewide, toll-free Early Intervention number. 1-800-543-3098, TTY 1-800-499-1816, Spanish 1-866-450-2838

CHILD CARE

Office of Child Care Subsidy provides Alabama's low and moderate-income families with equal access to affordable and quality child care services. 1-866-528-1694 dhr.alabama.gov/services/Child_Care_Services/Subsidy_Overview.aspx

Child Care Management Agencies supply resources and referrals for families and child care providers. dhr.alabama.gov/counties/daycare_agency.aspx

Child Care Quality Enhancement Agencies deliver training and technical assistance for child care providers to improve quality, health, safety, and nutrition. dhr.alabama.gov/services/Child_Care_Services/CCQuality_Enhancement_Agencies.aspx

Don't Be In The Dark About Child Care offers research and recommendations regarding high quality child care. 1-866-711-4025 alabamachildcarefacts.org

OTHER ALABAMA RESOURCES

2-1-1 Connects Alabama is a statewide call system of information and referral whose mission is to provide easy access to health and human services available throughout Alabama. Dial 2-1-1 211connectsalabama.org

Alabama Department of Children's Affairs coordinates First Teacher Home Visitation programs and First Class Pre-K programs, and houses the Head Start Collaboration Office for the state. 1-334-353-2700 children.alabama.gov

Alabama Interagency Autism Coordinating Council is a network of leaders developing a comprehensive system of care for individuals with autism spectrum disorder and their families. autism.alabama.gov

Autism Society of Alabama improves services for persons with autism spectrum disorder and their families through education and advocacy. 1-877-428-8476 autism-alabama.org

Alabama Department of Education manages K-12 education and special education services for preschool through grade 12. 1-334-242-9700
Alabama Special Education Services 1-334-242-8114
www.alsde.edu

Department of Child Abuse and Neglect Prevention the state's Children's Trust Fund, advocates for children and the strengthening of families throughout Alabama. 1-334-262-2951 ctf.alabama.gov

OTHER ALABAMA RESOURCES *Continued*

To **Report Child Abuse and Neglect** contact your county Department of Human Resources. dhr.alabama.gov/counties/county_select.aspx

Help Me Grow Alabama connects children and families to services they need to address developmental, social, emotional, and behavioral concerns.
1-866-711-4025 HelpMeGrowAL.blogspot.com

NATIONAL WEBSITE RESOURCES

American Academy of Child and Adolescent Psychiatry: aacap.org

American Academy of Pediatrics: healthychildren.org

Autism Society of America: autism-society.org

Autism Speaks: autismspeaks.org

Born Learning: bornlearning.org

Center for Child and Human Development: gucchd.georgetown.edu

Center for the Study of Social Policy- Strengthening Families Initiative: strengtheningfamilies.net

First Signs: firstsigns.org

Help Me Grow National: helpmegrownational.org

Learn the Signs. Act Early: cdc.gov/ncbddd/actearly/index.html

National Federation of Families for Children's Mental Health: ffcmh.org

National Institute of Mental Health: nimh.nih.gov/index.shtml

Reach Out and Read: reachoutandread.org

Substance Abuse Mental Health Services Administration: samhsa.gov

Zero to Three: zerotothree.org

LOCAL CONTACTS

 Please write in local contact information where applicable

County Health Department: adph.org/administration/Default.asp?id=505

Home Visiting Coordinator:

County Department of Human Resources: dhr.alabama.gov/counties/county_select.aspx

Community Action Agency: caaalabama.org/contact.php

Head Start or Early Head Start: eclkc.ohs.acf.hhs.gov/hslc/HeadStartOffices

School District: www.alsde.edu/Home/SchoolInfo/CountyMap.aspx

First Class Pre-K Site:

Child Care Management Agency: dhr.alabama.gov/counties/daycare_agency.aspx

Mental Health Center: mh.alabama.gov/ID/RegionalOffices.aspx

Home Health Provider:

Rehabilitation Provider:

Library:

Other:

STATE OR NATIONAL

POLICE, FIRE, OR AMBULANCE: 9-1-1

Child Abuse Hotline: 1-800-422-4453

Domestic Abuse Hotline: 1-800-799-7233, TTY 1-800-787-3224

Poison Control: 1-800-222-1222

Substance Abuse Hotline: 1-800-662-4357



For more information:
Alabama Partnership for Children
smartstartalabama.org
2529 Bell Road • Montgomery, AL 36117
1-334-271-0304 • 1-866-711-4025

“Every Alabama Child Will Have the Opportunity to Succeed in Life”

This was made possible by:

Alabama Department of Public Health: Early Childhood Comprehensive Systems
Alabama Partnership for Children • Help Me Grow Alabama Leadership Team

Please help us improve this guide!

Visit smartstartalabama.org/feedback
or email comments to info@smartstartalabama.org.

Design shared by Kentucky Partnership for Families and Children © Copyright 8/2013
Graphic Design: Rob Gorstein Design, Inc.