

Formula for Success

Ready Families in Ready Communities
+ Ready Services (Health)
+ Ready Services (Early Education)
+ Ready Schools
= Ready Children with Bright Futures

The *Blueprint for Zero to Five* is a structure for planning, funding, advocacy, accountability, and policy decisions. Developed through the Early Childhood Comprehensive Systems Initiative of the Alabama Department of Public Health, Alabama's *Blueprint for Zero to Five* is based on the report from the National School Readiness Indicators Initiative, a 17-state initiative with these objectives:

- ✓ to create a set of measurable indicators related to and defining school readiness that can be tracked over time at the state and local levels;
- ✓ to have states and local governments adopt this indicators-based definition of school readiness, fill in gaps in data availability, track data over time and report findings to the citizens;
- ✓ to stimulate policy, program and other actions to improve the ability of all children to read at grade level by the end of the third grade.

Statewide support for the *Blueprint* as the comprehensive plan for children's healthy development and school readiness results from state leadership, input from local service providers and parents, and a unified message about what young children need to develop optimally.

Blueprint for Zero to Five Partners

Alabama Attorney General's Office
Alabama Chapter of American Academy of Pediatrics
Alabama Department of Child Abuse and Neglect Prevention
Alabama Department of Children's Affairs/Office of School Readiness
Alabama Department of Human Resources
Alabama Department of Mental Health
Alabama Department of Public Health
Alabama Department of Rehabilitation Services/Early Intervention
Alabama Medicaid Agency
Alabama Network of Family Resource Centers
Alabama Partnership for Children – Smart Start
Alabama State Department of Education
Blue Cross Blue Shield of Alabama
Child Development Resources
Childcare Resource Network
Childcare Resources
Children's Health Systems
Community Foundation of Calhoun County
Community Foundation of Greater Birmingham
Family Guidance Center of Alabama
FOCAL - Federation of Child Care Centers of Alabama
Head Start State Collaboration Office
Parent Representatives
Pediatricians and Primary Health Care Providers
Reach Out and Read
The ARC of Alabama, Regional Agencies
United Cerebral Palsy
United Way Success By 6
VOICES for Alabama's Children

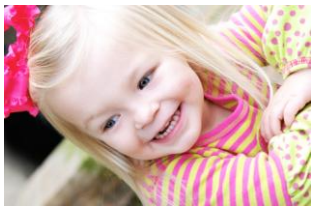


Alabama Early Childhood Comprehensive Systems Initiative

The Blueprint for Zero to Five is supported by the Alabama Department of Public Health through the Early Childhood Comprehensive Systems Grant.

The Blueprint for Zero to Five is offered as the starting point for directing resources and efforts toward what has proven to make a difference in the lives of young children.

Blueprint for Zero to Five



Components of School Readiness

Indicators of Child Well-Being

Action Steps to Achieve our Vision: Every child healthy and ready to succeed in school and life

Ready Families in Ready Communities

+

Ready Services: Health

+

Ready Services: Early Education

+

Ready Schools

=

Ready Children with Bright Futures

- ☆ Births to Teens & Single Mothers
*# of births to unmarried women
% births to mothers with less than 12th grade education*
- ☆ Child Abuse and Neglect
rate of substantiated child abuse and neglect
- ☆ Family Information and Resources
% of families participating in a research-based parent support program

- ☆ Health Insurance
% of children under age 6 without health insurance
- ☆ Medical Homes
% of children who receive health care from a consistent health care provider
- ☆ Comprehensive Screenings
% of children who receive periodic developmental screenings & appropriate referrals

- ☆ High Quality Child Care Programs
% of child care programs nationally accredited or demonstrating high quality through an objective measure
- ☆ Access to Child Care Subsidies
% of eligible children under 6 receiving child care subsidy or other financial assistance/scholarships

- ☆ School Success
*1st grade retention rates
% of children with reading and language proficiency by Grade 3*
- ☆ Transition Teams
% of schools participating in community transition teams made up of child care, Head Start, Prek, kindergarten teachers

- ☆ Language Development
- ☆ Approaches to Learning
- ☆ Cognition & General Knowledge
- ☆ Social & Emotional Development
- ☆ Physical Well-Being & Motor Development

- ☆ Support programs to decrease teen pregnancy and single parent rates
- ☆ Support evidence-based programs that build strong, resilient families and prevent abuse and neglect
- ☆ Expand funding of evidence based programs that strengthen families

- ☆ Continue efforts to achieve 100% health insurance coverage
- ☆ Ensure access to “medical homes” for pregnant moms & young children
- ☆ Increase the availability of comprehensive developmental screenings & follow-up on recommended referrals

- ☆ Develop a rating system to enable & reward programs committed to high quality & to provide parents information on programs
- ☆ Expand access to subsidies for low-income families to ensure that all children have access to high quality care

- ☆ Develop an assessment and tracking mechanism to follow children in Kindergarten and make data available about readiness and early school success
- ☆ Support development of Transition Teams in each school district that build community awareness and coordinate school readiness efforts

- ☆ Annually report conditions of school readiness, changes in specific indicators, and adjust plan accordingly

READY STATES
Ready States requires that we carefully assess policy, funding and accountability processes across systems, and this can only be accomplished by the highest level of state leadership.

For more information, including a full set of indicators, please visit www.SmartStartAlabama.org or contact the Alabama Partnership for Children by calling toll-free 1-866-711-4025.